

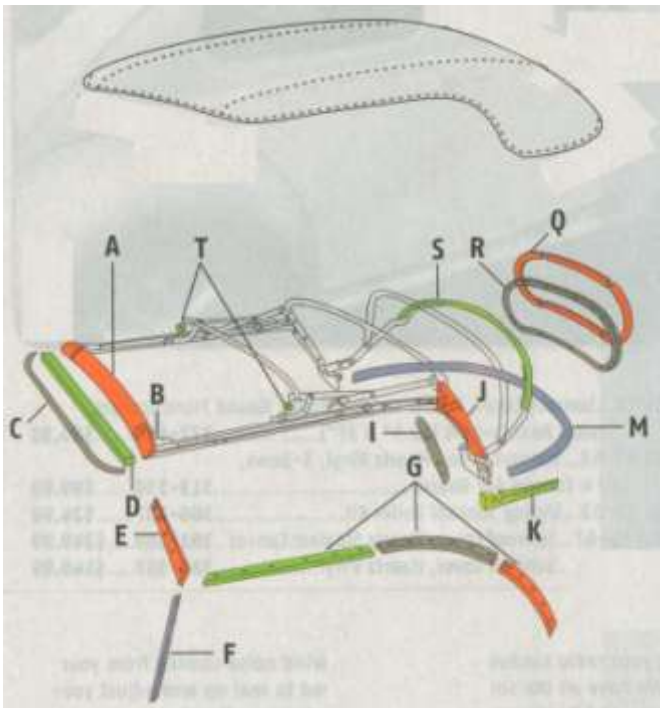
Chapter 15 - Convertible Top Removal (Video Clip 15)



492. Rear view of Convertible top prior to removal. The top was last replaced in 1984.



493. Front view of Convertible top prior to removal.



Blow-Up of Parts to be Removed

- A. Header Bow
- B. Frame Connection
- C. Front Bow Seal
- D. Header Foam Seal
- E. Bow Cover Plate
- F. Door Pillar Seal
- G. Side Molding with Aluminum Secure
- I. Wood Inner Quarter Facing
- J. Wood Outer Quarter Facing
- K. ??
- M. Wood Rear Body Tack-strip
- Q. Wood Rear Window Tack-strip
- R. Metal Rear Window Frame

Note Top Padding Not Shown



494. With a Phillips screwdriver remove the pan-head wood screws on the header bow cover plate (E).

Screw size are pan-head sheet metal type M5 x 1.5 x 15mm long.



495. Remove the screws to the secure strips on the rubber molding seal (C) for the bow top to windshield connection.

Wood screw size are stainless steel sheet metal type M3.5 x 1.5 x 15mm long.



496. Lift the rubber molding and secure strip (C) off the bow.



497. Remove the aluminum end cap cover for the frame on both sides of the car. Note these pieces are not shown on the blow-up diagram. On mine, one piece on the left side was missing and will be replaced.



498. Remove the screws to the secure strips on the rubber molding (G) for rear quarter window on both sides of the car.



499. With a Phillips screwdriver remove the two bottom screws to the top frame latch. Note the latch is also not shown on the blow-up diagram.



500. With a Phillips screwdriver remove the side screws to the top frame latch and remove the latch. Repeat for the other side of the top frame.



501. With a pick or screwdriver remove the staples on the bottom side of the bow.



502. With a pick or screwdriver remove the staples on the back side of the bow.



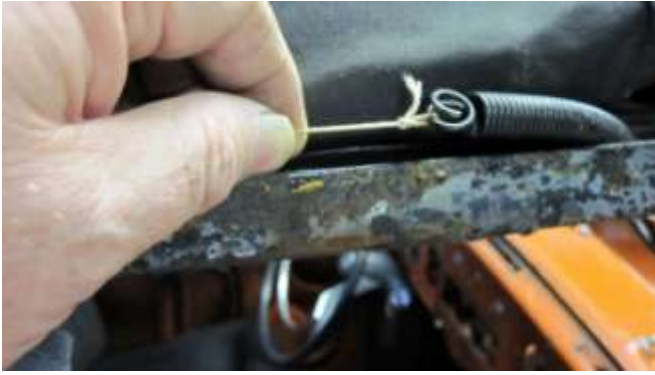
503. Pull the vinyl/canvas top back.



504. Remove the stainless steel wood screws on the back side of the bow frame connection (B) as shown on both sides of the frame.



505. Pull the canvas top side covers off the top frame. Note this covering is not original, but I used this extra vinyl to cover the side frame back in 1984, since I thought it made the frame look better. Repeat for the opposite side of the car.



506. Disconnect the side tension springs on each side of the top frame.



507. I found it was easier to raise the top about half way to disconnect the string to the tension spring.



508. Remove the remainder of the quarter window rubber strip (G) and secure strip with a screwdriver on each side of the car.



509. With a pick or screwdriver pull out the staples in the wood quarter molding (I) on each side of the car.



510. With a Phillips screwdriver remove the grommet snap screw on each side.



511. With a flat head screwdriver loosen the rear window rubber seal by sliding the screwdriver around the window frame both inside and outside of the car.



512. As with the front windshield, sacrifice the rubber seal by cutting around the entire perimeter of the frame as shown.



513. Pull the cut rubber strip off around the entire perimeter.



514. I went inside the car and had my wife, Wilma, stand on the outside to catch the window as I pushed the window out.



515. Wilma holding the rear window. Note: Last time we replaced the top, in 1984, the rear window *installation* was the hardest part and my wife has always said she would divorce me before we did that again. She helped at the spur of the moment since it was my 67th birthday and we were *removing*, not installing.



516. Spray penetrating oil on both ends of the tension cable bolt.



517. Clamp a vice grip pliers on the cable and use a 10MM wrench to remove the nut on both cable ends.

Cable threads are M6 x 1.0



518. Pull the cable ends out of the car through the opening in the canvas/vinyl top.



519. Pull the cable out of the car body groove.



520. Then, pull the cable out of the car on the opposite side of the car.



521. Cut the canvas/vinyl top around the window opening and remove the top from the car.



522. Top with canvas/vinyl top removed and frame and padding and liner remaining. Clean up, tag and bag all parts.

(Work on this section - 2 hours)



523. Remove extra bow seal on the front bow (A)



524. Pull seal off front bow.



525. Pull padding off bow (A).



526. Padding pulled back.



527. Pull liner off the bow (A).



528. Pull staples out of the bow (A).



529. Pull padding off the rear wood bow (M).



530. Pull liner off the rear wood bow (M).



531. Homemade 1984 rear bow (M) exposed.



532. Cut padding around the rear window frame.



533. Cut padding around the rear window frame.



534. Cut liner around the rear window frame.



535. Remove the rear window frame (R & Q).



536. Pull padding off the rear bow above window.



537. Close-up of the rear bow (S) above the window.



538. View of how liner is attached to frame.



539. View of how liner is attached to frame.



540. View of how liner is attached to frame.



541. Top with everything removed but frame and outer quarter facing.



542. Remove the wood screws on outer quarter facing (J).



543. With a 14mm socket remove the three frame bolt on each side of car and lift the top frame off.

Bolt is a M8 x 1.25 x25mm long (Similar to floor pan bolt)

*Work on this section - 3 hours
Work on this chapter - 5 hours
Total hours - 245*