

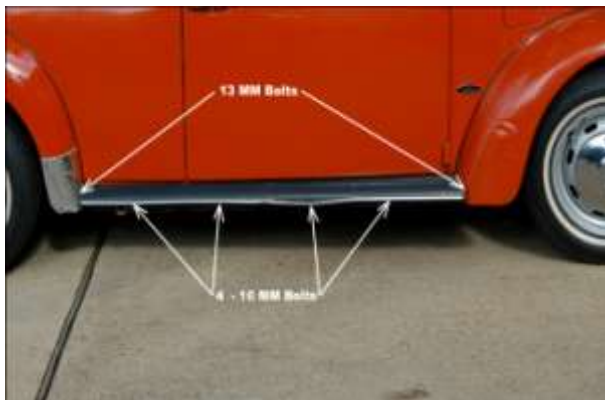
Chapter 3 Demolition (Video Clip 3)



14. Jack up the car and put the car on 4 jack stands.



15. Spray penetrating oil on the running board bolts and the pan bolts. Use a flashlight to make sure you do not miss any bolts.



16. For the Running Board there is a 13mm bolt (M8x1.25x20mm) and nut at each fender and four 10mm bolts (M6x1.0x15mm) along the length of the running board as shown.



17. Remove the fender bolts and loosen the 4 side bolts and the running board should lift up and out as shown.



18. For the floor pan use a 13mm socket and remove the 9 bolts under the car as shown. There are 2 more floor pan bolts on each side up front that will be removed later.



19. Clean the bolts and washers with mineral spirits and then with WD-40. Then dry them off. Discard the rubber washers that mount between the fenders and the running board, buy new ones.



20. Tag and bag both the running board bolts and the floor pan bolts in individual bags.



21. Store the running board bolts and the floor pan bolts in the container with the previously removed items.

(Work on this Section - 3 hours)



22. Remove the front kick plate on the passenger side with a screwdriver.



23. After watching DVD 6 Bug Me Video on the floor pan replacement again, mark the cut-out location for the rear portion with chalk.

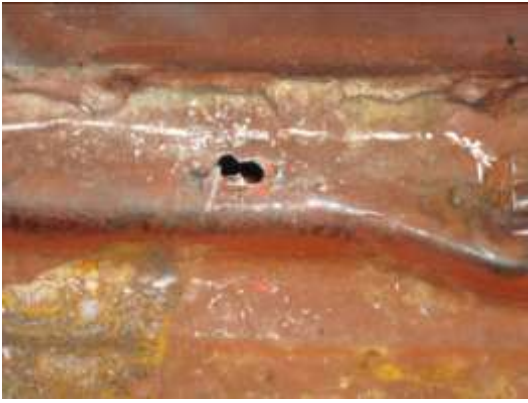


24. Mark the cut-out location for the front portion with chalk, just like the rear portion above.



25. Main tools expected to be used.

- *Cut-off Saw, new disks*
- *Gloves*
- *Goggles,*
- *Reciprocating Saw*
- *And of course hammer, chisel, pry-bar and angle grinder & a vacuum cleaner.*



26. Drill two holes close together and wallow them out to allow the saw blade to enter.

(Passenger Side)



27. First cut shown for the rear portion.

(Passenger Side)



28. First cut with the cut-off saw shown on the front portion.

(Passenger Side)



29. Main interior of the passenger side removed.



30. Start ripping up the remaining portion of the floor pan.



31. Use a chisel and hammer to break the welds loose as shown. This is a slow process, take your time and do it right.



32. Use a cut-off saw to grind the welds off. This is a also a slow process so wait and use a die grinder later.



33. The rear section cleaned up on the passenger side.



34. The front section cleaned up on the passenger side.



35. If a few of the welds remain, come back later and grind them off with a die grinder.

(Work on this Section - 3 hours)



36. Move to the driver side, which requires removing the pedal cluster and protecting the brake lines and the electrical cables.



37. Remove the front (M10x1.5x30mm) bolt of the pedal cluster with a 17 mm socket.



38. Remove the rear bolt of the pedal cluster with a 17 mm socket.



39. Remove the clip on the brake rod connector, with a screwdriver.



40. Remove the brake rod connector by pulling it straight out.



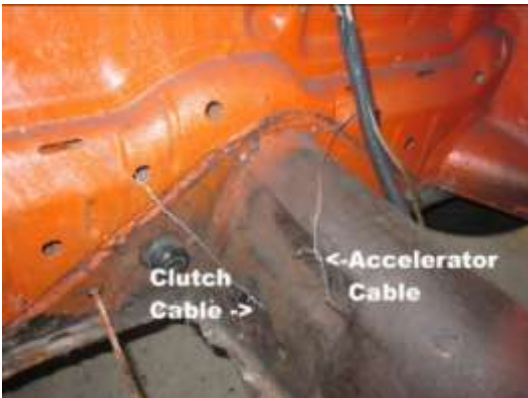
41. Remove the accelerator cable with pliers.



42. Accelerator cable shown removed.



43. Tie the accelerator cable out of the way with a string or wire as shown.



44. Tie the clutch cable out of the way with a string or wire as shown. Check to see if either the clutch or accelerator cable needs to be replaced.



45. Remove the entire pedal cluster assembly and clean with paint thinner and store in a bag with all bolts and brake clip. You can paint this later as necessary.



46. Tie the brake line out of the way.



47. Disconnect and move the electrical lines out of the way.



48. Drill starter holes for the saw blade and cut out the driver side pan using the same procedure utilized on the passenger side pan, being very careful around the brake lines and electrical cables.



49. Driver side front, shown with the floor pan removed.



50. Driver side rear, shown with the floor pan removed.

(Work on this Section - 3 hours)



51. Use angle grinder to clean up the welds. Wear goggles, face protection and a long sleeve shirt and have a fire extinguisher close by and make sure no flammables are nearby. Please be careful.

Work on this section - 2 hours
Work on this chapter - 11 hours
Total hours - 14