

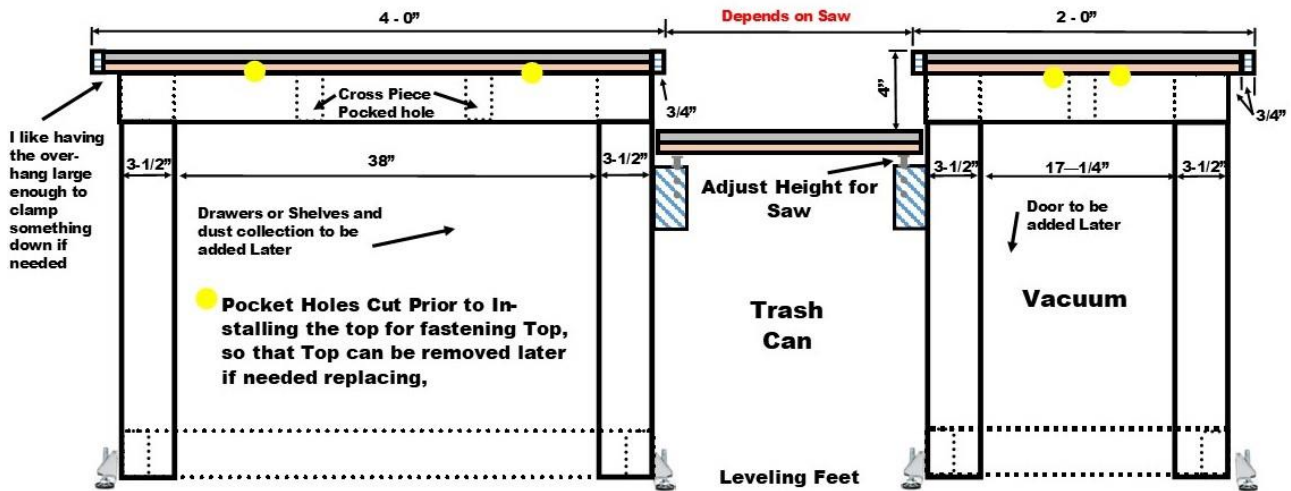
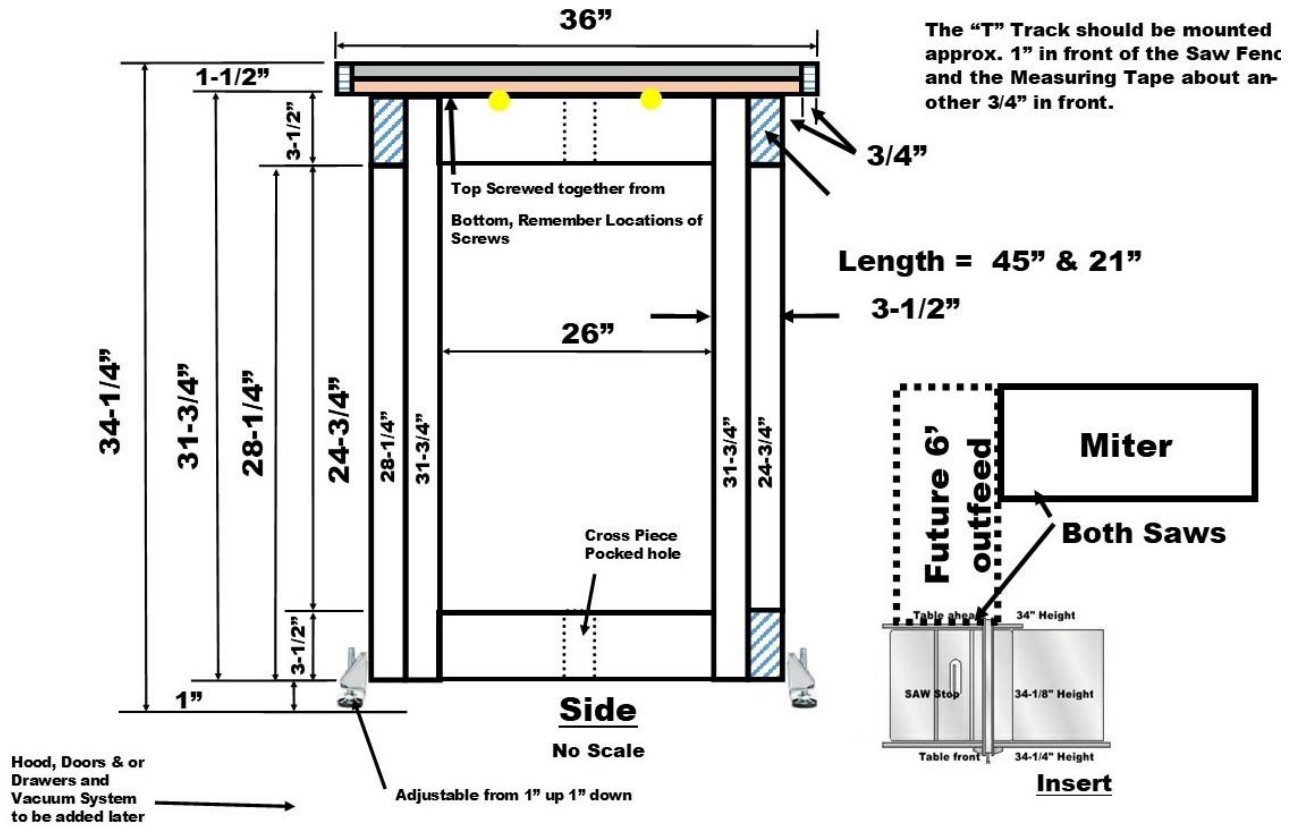
Neil's Miter Saw Table

9-16-2022

Phase I is Complete as shown Below



Miter Saw Cabinet 1



Simple—Workshop Miter Saw Table 4' & 2' Sections

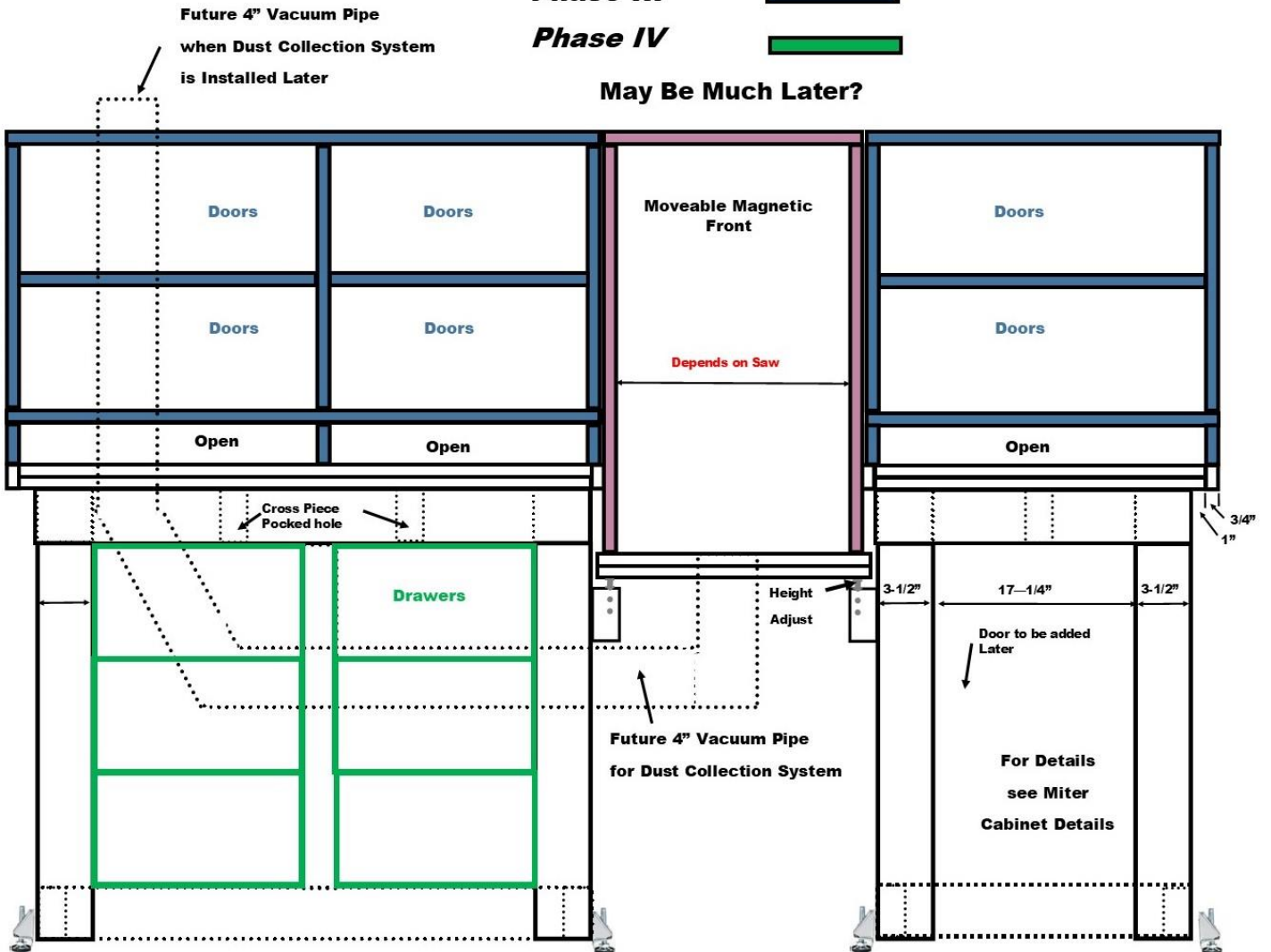
Overhead Miter Saw Cabinets—Phase II, III & IV

Phase II

Phase III

Phase IV

May Be Much Later?





1. Neil cutting the front 2x4 legs to length.



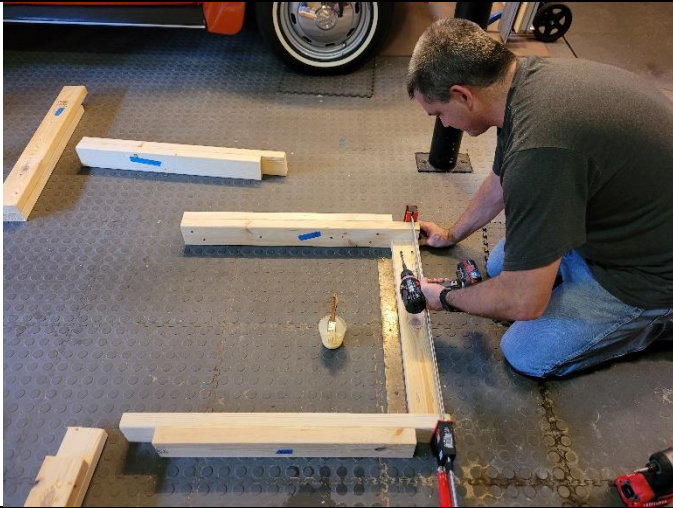
2. Malcolm cutting the rear 2x4 legs to length.



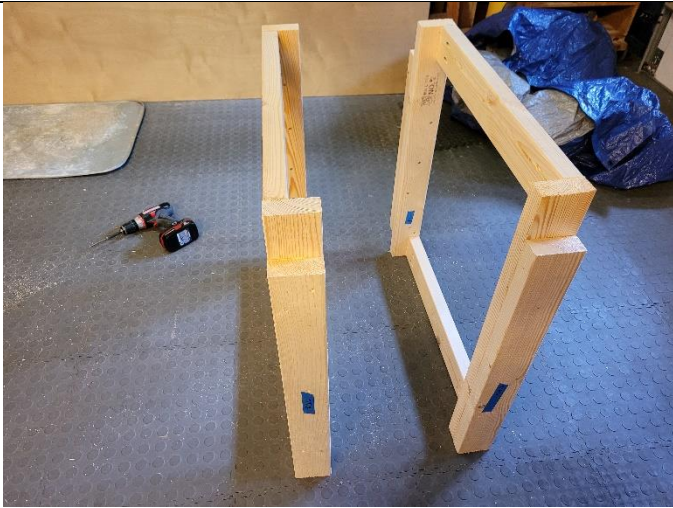
3. Neil gluing & screwing the legs together.



4. Close up of my temporary stop block assembly.



5. Neil gluing and screwing side bracing to legs.



6. Left table leg assembly put together.



7. Installing interior cross bracing after exterior runners have been installed.



8. Cross bracing installed with glue & pocket holes screws.



9. Day's Work done – Actually only a half day of work.



10. Completed Frame.



11. Loading frame to carry to Neil's workshop in Baldwin County.



12. Neil installed the leveling feet.



13. Neil added pocket holes on the top frame to fasten the top down later.



14. Malcolm cutting the right-side table plywood top to oversize length with the track saw.



15. Neil cutting the right-side table plywood top to oversize width with the track saw.



16. Neil applying glue to the bottom layer of plywood on the left-side table.



17. Neil putting clamps on and installing screws from the bottom of the left side table.



18. Screws and clamps shown on the bottom side of the left table.



19. Neil putting clamps and screws from the bottom side of the right table.



20. Malcolm & Neil's new saw.



21. Overnight the glue has dried, and the clamps taken off and now Neil is cutting the Left-side top to exact size.



22. Malcolm cutting the right-side top to exact size.



23. Platform rails close-up to show the method to make fine adjustment to the height of the saw table platform. We then installed these two rails to hold the platform.



24. We put in a temporary platform in place to better determine the size of the saw platform needed. Neil measuring these dimensions and we decided to make it larger than needed since we could always cut it down later.



25. We cut 2 sheets of plywood to oversize dimensions for the saw platform and glued and clamped them together as shown.



26. We attached the edging with glue and brad nails. Yes, even though after careful planning the router had to cut through one of the brads when cutting the "T" track later.



27. Malcolm cutting of the excess length of edging.



28. Edging complete and miter saw station nearing complete, just need to complete the saw platform and the station will be useable.



29. Saw platform cut to 32-1/2" x 32-3/4" and put in place.



30. Saw & platform temporary in Place



31. System nearly complete.



32. Move system in place and Level up tables and saw platform.



33. Neil Routing out slot for the "T" track on the left Table.



34. Neil Routing out slot for the "T" track on the right Table.



35. Neil Routing out the indentation for the measuring tape on the left Table.



36. Check tape for fit both width & depth.



37. System ready for finishing.



38. System ready for finishing.



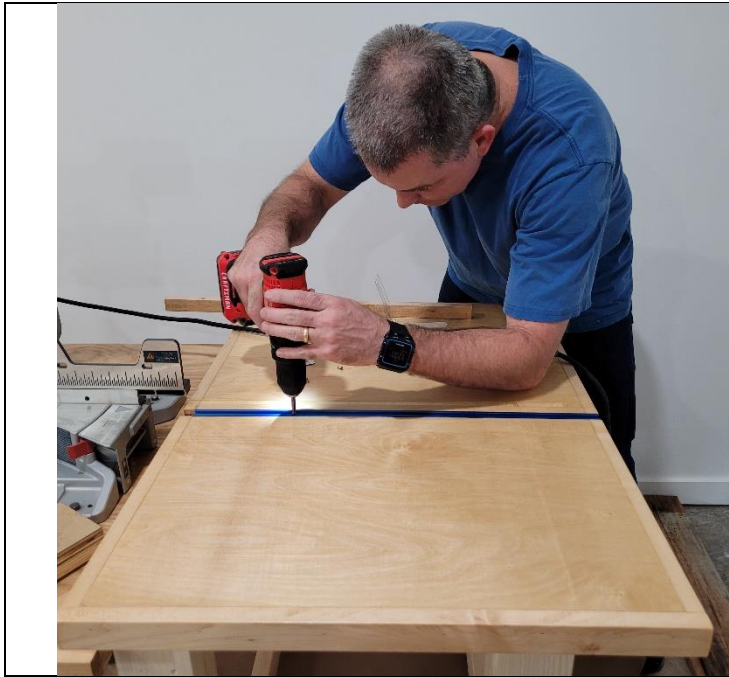
39. System after 4 coats of clear shellac.



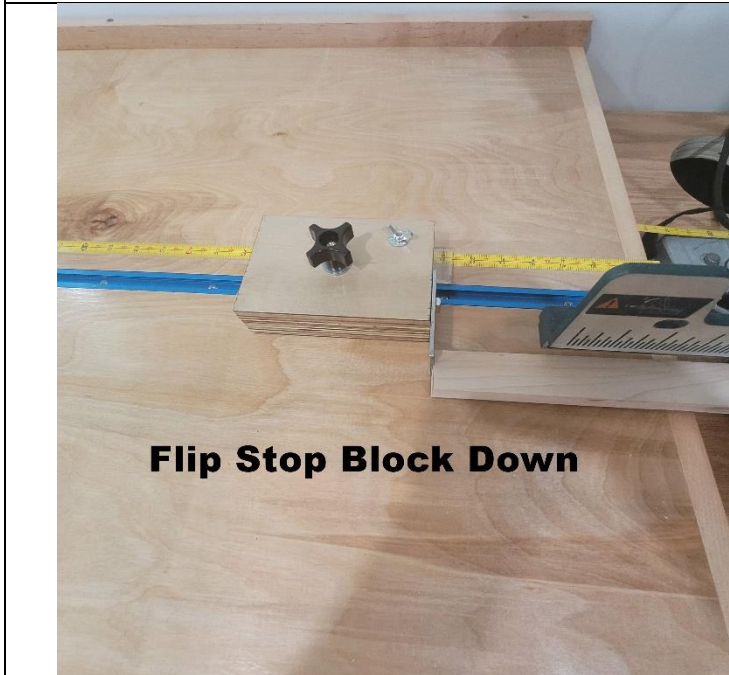
40. Cut hole for future dust collection.

41. Finish hold.





42. Neil installing "T" Track



43. "T" Track with Flip Stop DOWN.

Flip Stop Block Down



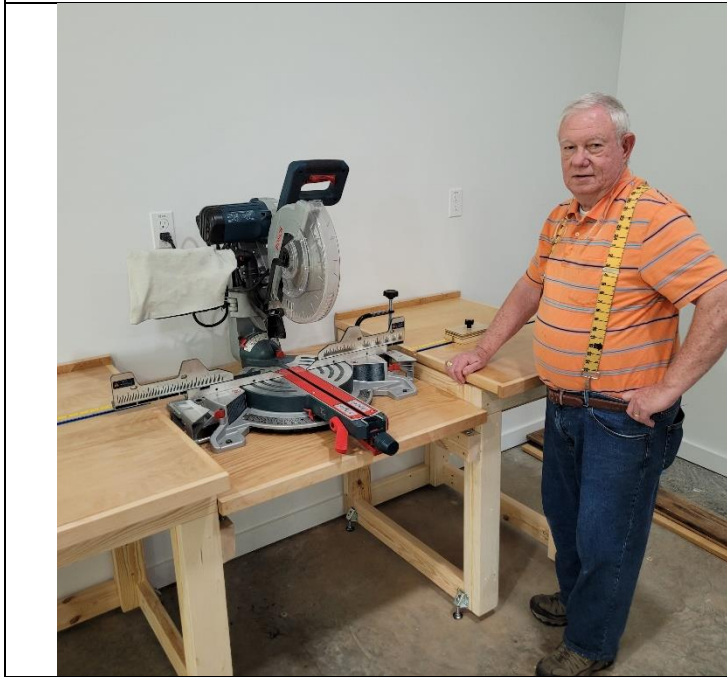
44. "T" Track with Flip Stop UP



45. Standard Stop Block on Right Table.



46. Close up of Saw & Saw Support.



47. Malcolm with phase 1 of the Miter Table Complete.



48. Neil with phase I complete for his Miter Saw Table



49. Phase 1 Miter Saw Table Complete 9-16-2022